



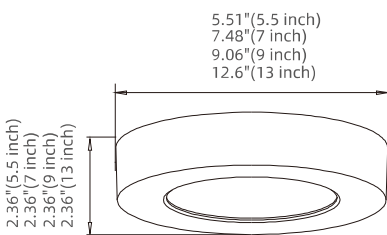
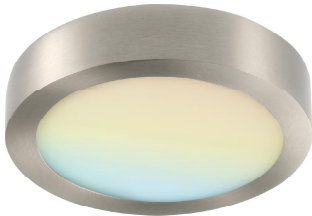
Project _____ Catalog # _____ Prepared by _____ Notes _____ Order # _____ Date _____

5 CCT Round LED Surface Mount Downlight

5.5 Inch / 7 Inch / 9 Inch / 13 Inch Flush Mount Ceiling Light

DESCRIPTION

This elegant design product can provide exceptional performance in general lighting application, and can also serve as a cost effective temporary lighting solution. The 5.5"/7"/9"/13" flush mount LED downlight provide 5 color temperatures of 2700K warm white, 3000K soft white, 3500K natural white, 4000K cool white or 5000K bright white for selection. This canless LED downlight is proved for top quality standard and safe operation. ETL-listed for your safety we uphold the highest standards for all our products by testing each product for optimal performance and safety. Our LED downlights are instant on with the latest in LED flicker -free technology for maximum eye comfort.



DIMENSION

Type	5.5inch	7inch	9inch	13inch
Length(Inch)	5.51	7.48	9.06	12.6
Wight(Inch)	5.51	7.48	9.06	12.6
Height(Inch)	2.36	2.36	2.36	2.36
Weight(LB)	1.50	1.85	2.49	3.97

ORDERING INFORMATION

Series	LJC-BMTD-G25.5CY10.5W-927-11-51	LJC-BMTD-G17CY13.5W-927-11-51	LJC-BMTD-G19CY18.5W-927-11-51	LJC-BMTD-G113CY25W-927-11-51
CRI	90	90	90	90
Power	10.5W	13.5W	18.5W	25W
CCT	2700K/3000K/3500/ 4000K/5000K	2700K/3000K/3500/ 4000K/5000K	2700K/3000K/3500/ 4000K/5000K	2700K/3000K/3500/ 4000K/5000K
Lumens	580LM	750LM	1050LM	1375LM
Efficacy	90LM/W	95LM/W	100LM/W	105LM/W
Dimmable	10%-100%	10%-100%	10%-100%	10%-100%





SPECIFICATION FEATURES

CERTIFICATIONS

- ETL
- Title 24 Certified

parameters

- Input Frequency 120V, 60HZ
- Ambient Temp -20°C -40°C
- Dimming 10%-100%

MATERIAL

- Finish White
- Housing Die cast aluminum
- Lens PC

APPLICATION

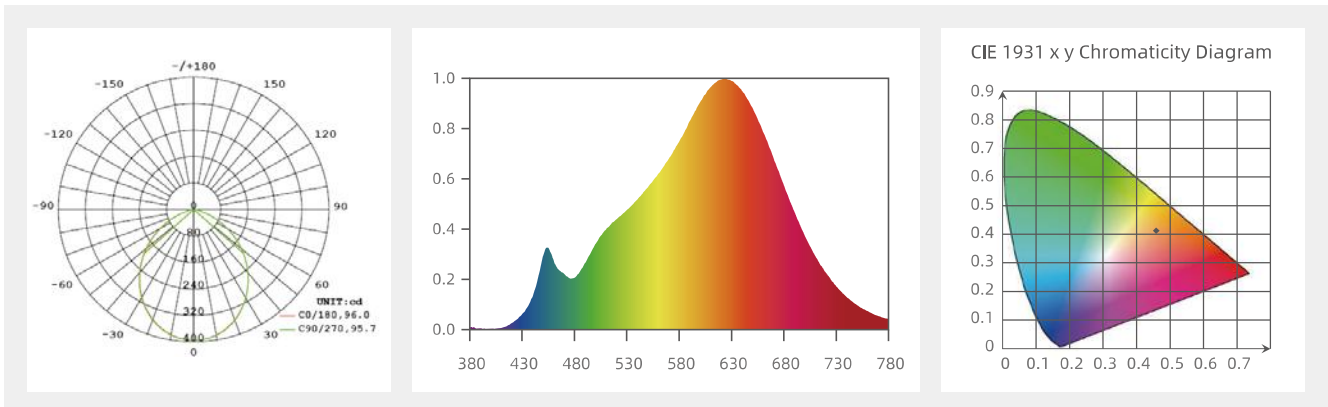
- Residential Airport
- Hospitality Hospital
- Retail Office

WARRANTY

- 5 years manufacturer warranty, consult support@runbisonlighting.com for more details.
- Terms and conditions may apply.



PHOTOMETRY



WARRANTY

This product is warranted for 5 years from the date of purchase. If this product does not perform to the specifications supplied on this package, send an email to support@runbisonlighting.com for product return and replacement. This replacement is the sole remedy available. Liability for incidental or consequential damage is expressly excluded.

